

Instructions

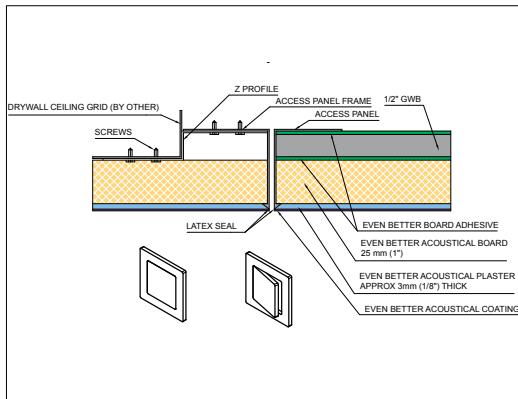
EVEN BETTER

Access Panel

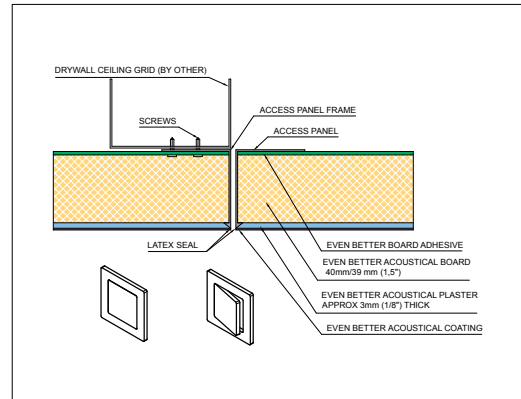
Installation instructions

The Even Better Access Panel can be installed directly on to the ceiling grid or against the substrate behind, both with Even Better 25 mm (1") and Even Better 39 mm (1.5"). This provides four different installation alternatives; see the drawing below. Carefully study the drawings to determine whether the panel will be installed directly against the ceiling grid or will be secured in the ceiling grid through the GWB behind. Note that the supplied Z-plates are only used in installation alternative 4, Even Better 25 mm (1"), directly against the ceiling grid.

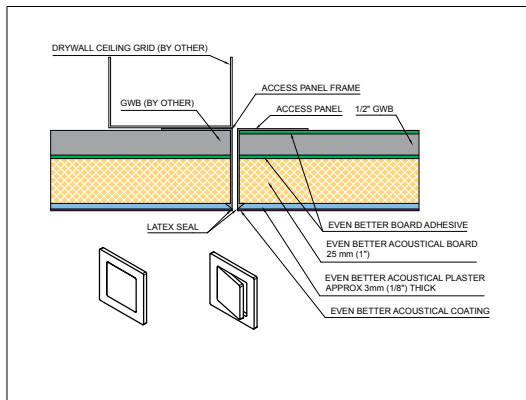
25 mm (1") Acoustical Board direct to grid



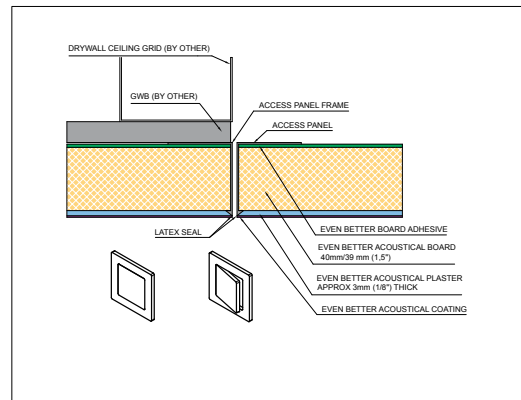
39mm (1.5") Acoustical Board direct to grid



25 mm (1") Acoustical Board direct to GWB



39 mm (1.5") Acoustical Board direct to GWB



Installation as follows:

The Even Better Access Panel can be installed directly on to the ceiling grid or against the substrate

- 1 Separate the access panel and frame. Install the frame on to the ceiling grid with the supplied screws. Use the installation drawings to determine whether or not there will be a plaster interlayer.
- 2 Fit the absorbent sheet and any plaster spacers behind in the panel using construction glue (for Even Better 25 mm) and mechanically fasten with Fellert spring washers and screws (For Even Better 39 mm). Pre-seal the joint between the absorbent sheet and panel edge with latex caulk. Let it dry per the manufacturer's instructions.
- 3 Fit the absorbent sheet in the surrounding ceiling per Fellert's installation instructions. Pre-seal the joint between the absorbent sheet and panel frame with latex caulk. Let it dry per the manufacturer's instructions.
- 4 Test install the panel to ensure a good fit.
- 5 Apply Fellert Even Better per Fellert's instructions. Keep the prefinished surfaces of the frame and panel masked during application, alternatively wipe with a clean cloth so that no plaster fastens on the frame's or panel's prefinished components. Keep access panel in place in the ceiling and spray plaster as per normal. Remove masking when complete.
- 6 Final step is attachment of the safety wire.

Storage

Store in enclosed environment. Keep the Even Better Access Panels in their boxes until they are to be installed.

