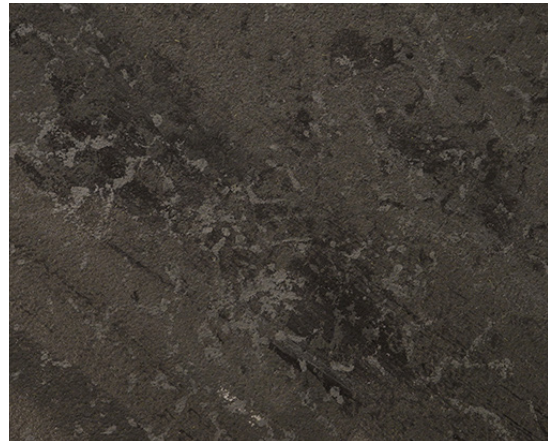


Product Data Sheet

EVEN BETTER Marble



Product Description

Even Better is a hand-crafted seamless sound absorption system. FELLERT's Even Better designer ceilings consists primarily of acoustical boards made from fiberglass and acoustical plaster made from perlite and cotton covered with acoustical coating.

Properties

The Acoustical Plaster is comprised of 40% recycled material

The Acoustical Board is comprised of 60% recycled material

Easy to maintain and repair

Powder products unaffected by frost

Pot Life of 12-18 hours

Excellent water vapor permeability

Thermal conductivity ASTM C-177 @ 75 F on 6.0 PCF 0.22

- 25 mm (1") Acoustical Board 4.55 R value
- 40 mm (1.5") Acoustical Board 6.82 R value

Suitable Substrates

16 mm (5/8") Regular gypsum wallboard

Metal ceiling grid

(400 mm or 16" o.c. as constructed for 16 mm (5/8") commercial drywall installations)

Concrete

Previously painted substrates

Installation

The Even Better Acoustical Board is typically attached to any of the suitable substrates with either the Even Better Board Adhesive or mechanically attached with the Even Better Spring Washer.

The Even Better system is installed according to manufacturers instructions. Contact FELLERT for application instructions and coverage rates.



Test Data

Sound Absorption as per ASTM C423 Type A mounting:

- NRC 0.60 with 25 mm (1") Even Better system
- NRC 0.60 with 40 mm (1.5") Even Better system

Sound Absorption as per ASTM C423 Type E-400 mounting:

- NRC 0.45 with 25 mm (1") Even Better system
- NRC 0.50 with 40 mm (1.5") Even Better system

Light Reflectance as per ASTM E147-98A: CIE L 90

Fire Testing as per ASTM E84-04: Class A

Fire Testing as per ISO EN 13501 2007: Bs1d0

VOC as per ASTM D3960: ffi 4g/L

Sound Absorption as per ISO 354 and ISO 11654 Type A mounting:

- $\alpha_w = 0.55$ (Absorption class D) with 25 mm (1") Even Better system
- $\alpha_w = 0.55$ (Absorption class D) with 40 mm (1.5") Even Better system

Sound Absorption as per ISO 354 and ISO 11654 Type E-200 mounting

- $\alpha_w = 0.50$ (Absorption class D) with 25 mm (1") Even Better system
- $\alpha_w = 0.55$ (Absorption class D) with 40 mm (1.5") Even Better system

Storage

Store all materials in an enclosed dry environment and not in direct sunlight. Protect Acoustical Coating and primer from frost.

Health & Safety considerations

When mixing any of the dry powder products, wear a dust mask.

When handling and installing any fiberglass boards, follow OSHA recommendations.

When using any of the Even Better products wear protective clothing and avoid contact with your skin whenever possible.

Wear eye protection at all times. If eye contact occurs, irrigate eye with clean water and seek immediate medical attention.

If any of the materials are swallowed, seek immediate medical attention.

